



Queen
Elizabeth's
— ACADEMY —

WELCOME TO
QUEEN ELIZABETH'S



Diverse
Academies

WELCOME TO QUEEN ELIZABETH'S ACADEMY

Queen Elizabeth's has been at the very heart of education within Mansfield since 1561. The academy has a long history and is now a very modern and forward-thinking place, with a vision to be the academy of choice for families in Mansfield.

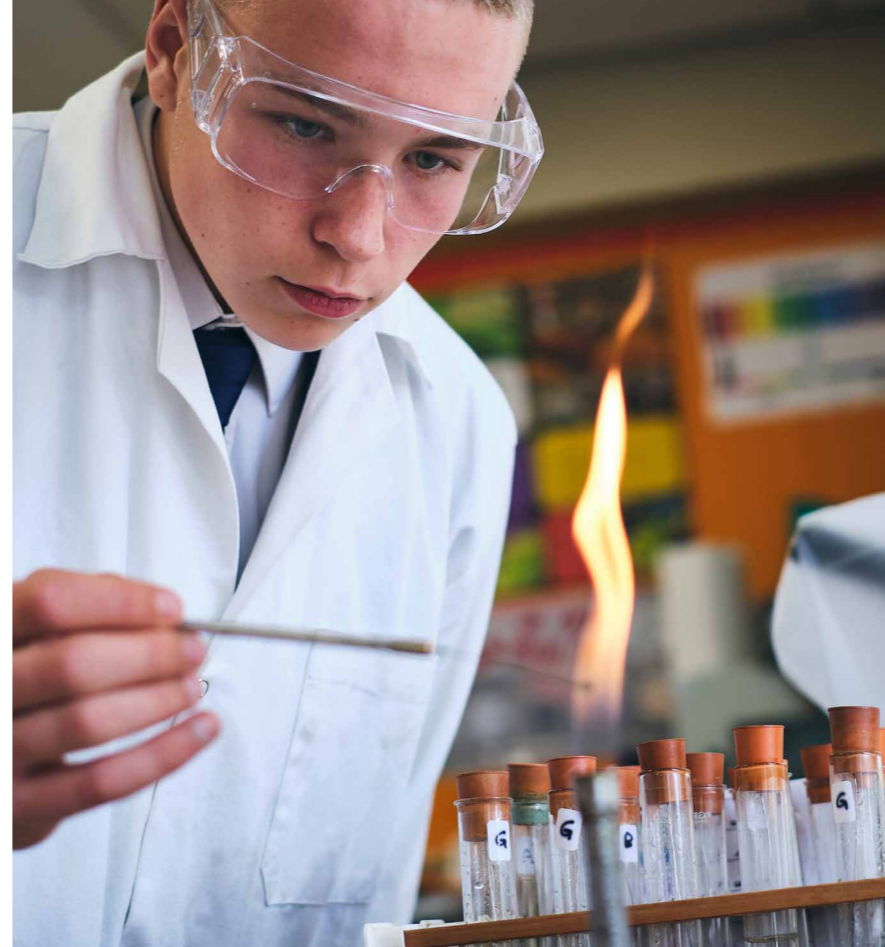


Kimberley Willmot
Principal

We teach children through a broad knowledge-based curriculum delivered in a traditional grammar-style setting. Students experience subjects that extend their knowledge and enable them to aspire to great things in their future. The opportunity to experience success is a fundamental part of personal growth, and we provide development opportunities both inside and outside of the classroom.

As a Church of England academy, we work in partnership with the diocese to provide an education that is distinctively Christian. The academy is inclusive for students from all backgrounds with a variety of needs – located in a multi-cultural community setting within Mansfield, we keenly embrace and celebrate this diversity.

We are always proud to show off the academy in action. Please feel free to arrange a guided tour and see how we can support your children as they take their next step in their education.



‘Life in
all its
fullness.’
(John 10:10)



VISION AND VALUES

At Queen Elizabeth's, we develop students with values, knowledge, skills and qualities to enable success in all aspects of their lives. We celebrate resilience, perseverance and dedication, and refer to this as 'grit'.

Students are supported to set high expectations and aspirations, work hard at all times to learn from mistakes and keep improving. Our students support each other and celebrate success together.

As a Christian academy, the values of respect, responsibility and compassion for others underpin everything we do. The phrase 'Life in all its fullness' reminds us of the importance of developing the whole child – our approach to care and guidance for students is excellent. We are proud of our family atmosphere which supports students to thrive.



SUCCESS

Students progress through an exciting and innovative curriculum that engages and enthuses, and accurately meets their needs, with excellent teaching and support.

INSPIRATION AND ASPIRATION

Our curriculum inspires our students, offering creative and vocational options alongside core subjects. We celebrate student achievements within our academy and ensure success is attainable for all.

LEADERSHIP

Students learn leadership skills that will enable them to succeed. They have opportunities to offer opinions about the academy to senior staff and work with the wider community, supporting their next steps to further education or employment.

RESPECT

We model respectful behaviour and our expectations are high for all students. They learn how to work through disagreements or difficult situations, respect the views of others and treat everybody equally.

CURRICULUM

All students follow a wide and varied knowledge-based curriculum delivered by subject experts. Our teachers teach directly from the front, challenging students to do their best and consistently apply themselves to their learning.

Each topic taught for every subject is accompanied by a knowledge organiser, to embed key facts and ensure that students have great core knowledge to work from and recall.

At key stage 3, students focus on learning skills and core competencies that they will use throughout their education and careers, such as writing and mathematical skills.

Students are given appropriate support and guidance as they move into key stage 4, and choose the courses which will shape their ongoing studies. At this stage, students have access to a wide range of GCSEs and vocational courses, including BTEC qualifications.



SIXTH FORM

Students attend the Hucknall Sixth Form Centre for their post-16 studies. The centre is a top-class facility with a wide range of academic courses at different levels, giving all students the opportunity to find subjects that match their future education and employment goals.

For more information, visit www.hsfac.org.uk



ENRICHMENT AND PERSONAL DEVELOPMENT

Students can access a wide-ranging enrichment timetable to allow the nurturing of skills or the discovery of new talents. The academy also links with many outside providers to offer further opportunities and experiences for students.



Alongside academic development, we empower students with knowledge and skills to enable them to positively contribute in society and the communities in which they live.

The values instilled in our students, coupled with the support they receive, give individuals the desire to continually want to achieve more. Our approach to behaviour, uniform and attendance embed high standards crucial to future education and employment.

Students who have additional needs are supported to make good gains in their academic and personal development. We also ensure that students with English as an additional language have access to appropriate support.

Our pastoral system, student leadership and a range of enrichment opportunities all actively contribute towards the development of personal skills. Our academy chaplain also leads opportunities for students to explore and celebrate their faith.


SUPPORT AND GUIDANCE

Ensuring that students feel supported during their education makes a big difference to the progress and achievement that individuals make. Our students are provided with appropriate support, information and guidance to enable them to focus on their learning.

Our pastoral structure operates within three houses, with students organised into mixed aged form groups. Students contribute to their houses through a wide range of different activities across all areas of academy life. By mixing students of different ages and experiences, this facilitates growth and development for all, with older students becoming role models and mentors to their younger peers.

The academy also offers robust support for students with special educational needs, focused on communication and interaction, cognition and learning, behaviour, emotions and social development, and sensory and/or physical needs. Our staff also work with outside agencies for additional specialist advice and provision.

Removing barriers to learning and participation, together with providing top-quality information and guidance, ensures all our students can achieve their potential.



‘All students are afforded the same opportunity to achieve their personal potential.’



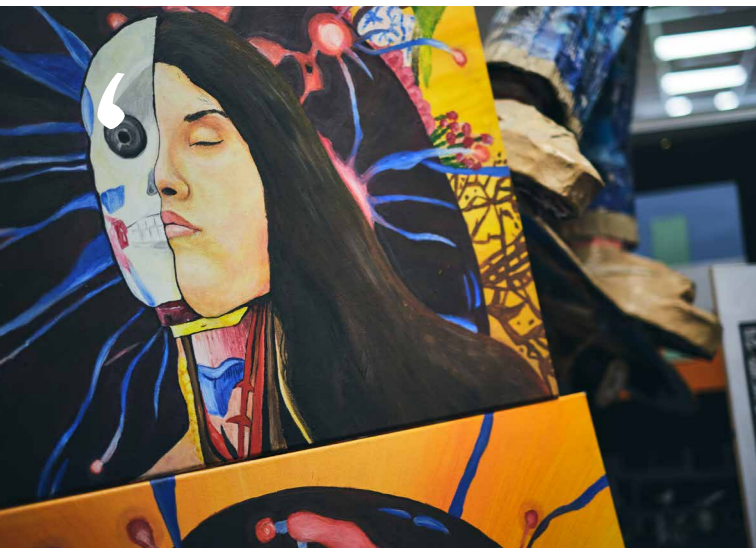
‘Leaders have created a culture of high aspiration for all pupils. They are determined that pupils will have a wide range of opportunities when they leave school.’
Ofsted 2019



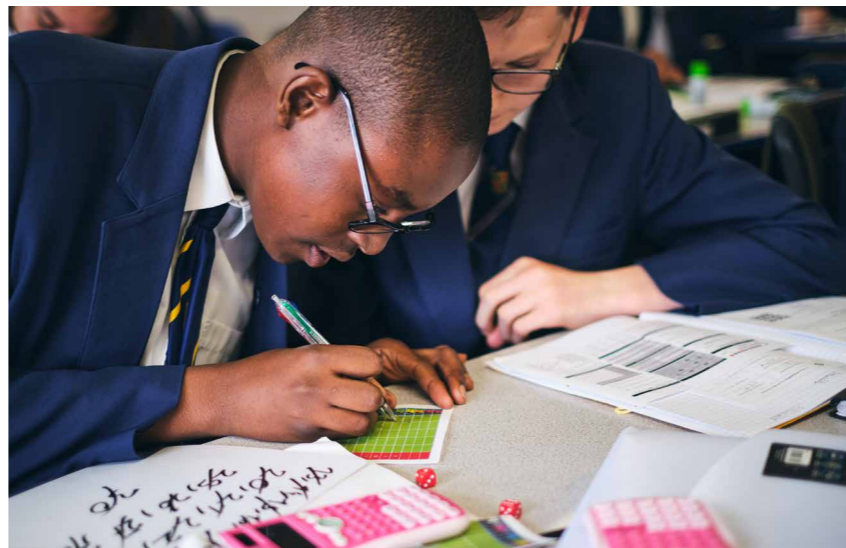
‘An amazing place to learn and grow. The direct teaching and knowledge organisers help students to develop their understanding of topics.’
Year 10 student



‘Thanks to the academy for the support they have given our daughter. She could not have made such progress without all the help from your outstanding SEND team.’
Parent



‘My son is absolutely thriving at Queen Elizabeth’s. The best move we could have made with unbelievable support from all the staff.’
Parent



ADMISSIONS

We welcome applications for admission to Queen Elizabeth's Academy from students of all faiths and none. Whilst we are a faith academy, it is not obligatory for parents/guardians or the individual students to practise a faith or to worship regularly. We have no defined catchment area owing to this status, our students attend from throughout Nottinghamshire and the edges of Derbyshire.

There are a number of ways to find out if Queen Elizabeth's is right for your child. We host open days throughout the year for students in years 5 and 6 together with an open evening in September. Term-time tours are also available for parents and students to enable you to see the academy on a normal working day. Call us on **01623 623559** to arrange a visit.

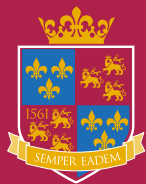
For further details on our admission arrangements, please visit the academy website.

Diverse Academies Learning Partnership

Queen Elizabeth's is part of the Diverse Academies Learning Partnership – a group of academies committed to the development and improvement of schools through collaboration and partnership. Our core focus is the achievement and development of each individual student. We have an established framework of core principles and practice to which all academies subscribe, whilst maintaining and developing each academy's unique identity and individual characteristics.

For more information, visit www.dalp.org.uk





Queen
Elizabeth's
ACADEMY

Queen Elizabeth's Academy
150 Chesterfield Road South, Mansfield, Nottinghamshire, NG19 7AP

Phone: **01623 623559**

Email: **info@queenelizabeths-ac.org.uk**

www.queenelizabeths-ac.org.uk



THE CHURCH
OF ENGLAND

Diocese of Southwell & Nottingham

Diverse Academies Learning Partnership is a partnership between the Diverse Academies Trust (Old Hall Drive, Retford, Nottinghamshire, DN22 7EA; registered company number 07664012) and the National Church of England Academy Trust (Annesley Road, Hucknall, Nottinghamshire, NG15 7DB; registered company number 07708713). Not for profit charitable trusts with exempt charity status, registered in England and Wales.