



Queen
Elizabeth's
— ACADEMY —

WELCOME TO
QUEEN ELIZABETH'S ACADEMY



Diverse
Academies

PRINCIPAL'S WELCOME

Queen Elizabeth's has been at the very heart of education within Mansfield since 1561. The academy has a long history and is now a very modern and forward-thinking place, with a vision to be the academy of choice for families in Mansfield.



Kimberley Willmot
Principal

We teach children through a broad knowledge-based curriculum delivered in a traditional grammar-style setting. Students experience subjects that extend their knowledge and enable them to aspire to great things in their future. The opportunity to experience success is a fundamental part of personal growth, and we provide development opportunities both inside and outside of the classroom.

As a Church of England academy, we work in partnership with the diocese to provide an education that is distinctively Christian. The academy is inclusive for students from all backgrounds with a variety of needs – located in a multi-cultural community setting within Mansfield, we keenly embrace and celebrate this diversity.

We are always proud to show off the academy in action. Please feel free to arrange a guided tour and see how we can support your child as they take their next step in their education.



Learning and
loving together
forever



LIFE AT QUEEN ELIZABETH'S

At Queen Elizabeth's, we develop students with values, knowledge, skills and qualities to enable success in all aspects of their lives. We celebrate **resilience, perseverance and dedication.**

Students are supported to set high expectations and aspirations, work hard at all times to learn from mistakes and keep improving. Our students support each other and celebrate success together.

As a Christian academy, the values of respect, responsibility and compassion for others underpin everything we do. Our Christian motto, 'Learning and loving together forever' reminds us of the importance of developing the whole child – our approach to rigorous, academic excellence and our caring, family atmosphere supports all students to thrive.



SUCCESS

Students progress through a rigorous, knowledge-based curriculum that engages and enthuses, and accurately meets their needs, with excellent subject expert teaching and support.

INSPIRATION AND ASPIRATION

Our curriculum inspires our students, offering creative and vocational options alongside core subjects. We celebrate student achievements within our academy and ensure success is attainable for all.

LEADERSHIP

Students learn leadership skills that will enable them to succeed. They have opportunities to offer opinions about the academy to senior staff and work with the wider community, supporting their next steps to further education or employment.

RESPECT

We model respectful behaviour through our core values and our expectations are high for all students. They learn how to work through disagreements or difficult situations, respect the views of others and treat everybody equally.

CURRICULUM

All students follow a wide and varied knowledge-based curriculum delivered by subject experts. Our teachers teach directly from the front, challenging students to do their best and consistently apply themselves to their learning.

Each topic taught for every subject is accompanied by a knowledge organiser, to embed key facts and ensure that students have great core knowledge to work from and recall.

At key stage 3, students focus on learning core knowledge and competencies that they will use and apply throughout their education and careers.

Students are given appropriate support and guidance as they move into key stage 4, and choose the courses which will shape their ongoing studies. At this stage, students have access to a wide range of GCSEs and vocational courses, including BTEC qualifications.



SIXTH FORM

We are linked to the Hucknall Sixth Form Centre for post 16 study. The centre is a top-class facility with a wide range of academic courses at different levels, giving all students the opportunity to find subjects that match their future education and employment goals.

For more information, visit www.hsf-c.org.uk

A young man in a school uniform (blue blazer, white shirt, blue tie) is playing drums. He is looking intently at the camera. The background is dark, and the drums are in the foreground, slightly out of focus.

ENRICHMENT AND PERSONAL DEVELOPMENT

Students can access a wide-ranging enrichment timetable to enable the nurturing of skills or the discovery of new talents. The academy also links with many outside providers to offer further opportunities and experiences for students.



Alongside academic development, we empower students with knowledge and skills to enable them to positively contribute in society and the communities in which they live.

The values instilled in our students, coupled with the support they receive, give individuals the desire to continually want to achieve more. Our approach to behaviour, uniform and attendance embed high standards crucial to future education and employment.

Students who have additional needs are supported to make positive steps in their academic and personal development. We also ensure that students with English as an additional language have access to appropriate support.

Our pastoral system, student leadership and a range of enrichment opportunities all actively contribute towards the development of personal skills. Our academy chaplain also leads opportunities for students to explore and celebrate their faith.


SUPPORT AND GUIDANCE

Ensuring that students feel supported during their education makes a big difference to the progress and achievement that individuals make. Our students are provided with appropriate support, information and guidance to enable them to focus on their learning.

Our pastoral structure operates within four houses known as Chappell, Dodsley, Flogan and Sterne. Students contribute to their houses through a wide range of different activities across all areas of academy life. Each house has a designated head of house, and the academy has a pastoral manager who oversees the houses.

The academy also offers robust support for students with special educational needs, focused on communication and interaction, cognition and learning, behaviour, emotions and social development, and sensory and/or physical needs. Our staff also work with outside agencies for additional specialist advice and provision.

Removing barriers to learning and participation, together with providing top-quality information and guidance, ensures all our students can achieve their potential.

A photograph of two students in school uniforms sitting at a desk. The student on the left is a young woman with long blonde hair, smiling and looking down at papers on the desk. The student on the right is a young man with dark hair, also smiling and looking towards the papers. They are both wearing dark blue school jackets over white shirts and dark ties. The background is slightly blurred, showing other students and classroom equipment.

‘All students are
afforded the
same opportunity
to achieve their
personal potential.’



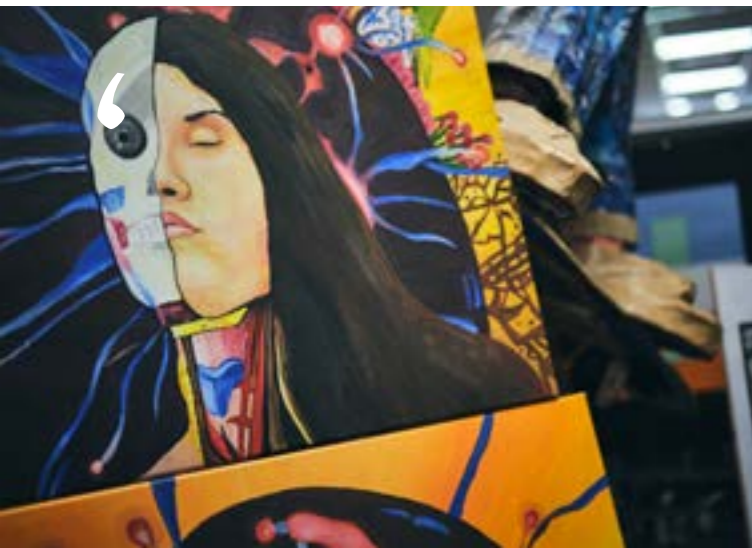
“ Leaders have created a culture of high aspiration for all pupils. They are determined that pupils will have a wide range of opportunities when they leave school.”
Ofsted 2019



“ An amazing place to learn and grow. The direct teaching and knowledge organisers help students to develop their understanding of topics.”
Year 10 student



“ Thanks to the academy for the support they have given our daughter. She could not have made such progress without all the help from your outstanding SEND team.”
Parent



“ My son is absolutely thriving at Queen Elizabeth's. The best move we could have made with unbelievable support from all the staff.”
Parent



ADMISSIONS

We welcome applications for admission to Queen Elizabeth's Academy from students of all faiths and none. Whilst we are a Church of England academy, it is not obligatory for parents/carers or the individual students to practice a faith or to worship regularly. We have a broad catchment area and our students attend from throughout Nottinghamshire and the edges of Derbyshire.

There are a number of ways to find out if Queen Elizabeth's is right for your child. We host open days throughout the year for students in years 5 and 6 together with an open evening in September. Term-time tours are also available for parents and students to enable you to see the academy on a normal working day. Call us on **01623 623559** to arrange a visit.

For further details on our admission arrangements, please visit the academy website: www.queenelizabeths-ac.org.uk



Diverse Academies

Queen Elizabeth's Academy is part of Diverse Academies Trust – a multi-academy trust with a vision to inspire, to raise aspiration and to create brighter tomorrows. Across primary, secondary and special settings, we share a common mission to nurture curiosity, develop wellbeing and empower children and young people to go beyond their aspirations. Together, we believe we can make a difference in our diverse communities, and in the lives of those who learn with us and work with us.

For more information, visit www.diverseacademies.org.uk





Queen Elizabeth's Academy
150 Chesterfield Road South, Mansfield, Nottinghamshire, NG19 7AP

Phone: **01623 623559**

Email: **info@queenelizabeths-ac.org.uk**

www.queenelizabeths-ac.org.uk



Diverse Academies Trust (Old Hall Drive, Retford, Nottinghamshire, DN22 7EA; registered company number 07664012) is a not for profit charitable trust with exempt charity status, registered in England and Wales.